

REVIEW

FOR THE GREAT BRITAIN COLLECTOR



DOWNEY HEAD 2½d

In this issue

- DOWNEY HEAD 2½d
- BOOKLET PANES — 'DOUBLE PAPER' VARIETY
- 1840 FIRST DAY COVERS
- ROYAL CYPHER MISSING PERF. PINS
- K.E.VII 1/- MISPLACED CENTRE
- K.G.V NOTES

75p

GREAT BRITAIN

DEFINITIVE SETS

	U/m	M/m		U/m
QUEEN VICTORIA				
1887-				
1900 Jubilee (14v.)	—	£185.00		
KING EDWARD VII				
1902-10 De La Rue (0) (15v.) ½d. x 2, 4d. x 2	—	£135.00		
1905-10 De La Rue (c) (9v.)	—	£135.00		
1911 Harrison (perf. 14) (5v.)	—	£40.00		
1911 Harrison (perf. 15 x 14) (5v.)	—	£30.00		
1911-13 Somerset House (8v.)	—	£65.00		
KING GEORGE V				
1911-12 Downey Head series (12v.)	£50.00	£30.00		
1912-24 Royal Cypher (14v.) 9d. x 1	£110.00	£55.00		
Ditto, watermark inverted (5v.)	£25.00	£16.00		
1913 Multiple Cypher (2v.)	£295.00	£195.00		
1918 Bradbury "Seahorses" (3v.)	—	£345.00		
1924 Block Cypher (12v.)	£115.00	£60.00		
Ditto, watermark inverted (3v.)	£2.50	£1.75		
Ditto, watermark sideways (4v.)	£95.00	£70.00		
1934 Photogravure, large format (2v.)	95p	60p		
Ditto, watermark inverted (2v.)	£115.00	—		
1934-35 Ditto, intermediate format (4v.)	£13.00	£7.50		
Ditto, watermark inverted (3v.)	£50.00	£35.00		
1935-36 Ditto, small format (11v.)	£79.50	£40.00		
Ditto, watermark inverted (3v.)	£20.00	£13.00		
Ditto, watermark sideways (4v.)	—	£75.00		
1934 Re-engraved "Seahorses" (3v.)	—	£385.00		
KING EDWARD VIII		U/m		
1936 K.E. VIII (4v.)		50p		
Ditto, watermark inverted (3v.)		£10.00		
KING GEORGE VI				
1937-47 Dark colours (15v.)		£26.00		
Ditto, watermark inverted (5v.)		£90.00		
Ditto, watermark sideways (5v.)		£75.00		
1939-48 High values (6v.)				£275.00
1941-42 Light colour (6v.)				£2.60
Ditto, watermark inverted (3v.)				£10.00
Ditto, watermark sideways (3v.)				£20.00
1950-51 New colours (6v.)				£2.60
Ditto, watermark inverted (5v.)				£11.40
Ditto, watermark sideways (4v.)				£2.75
1951 "Festival" high values (4v.)				£77.50
QUEEN ELIZABETH II				
1952-54 Tudor (17v.)				£75.00
Ditto, watermark inverted (5v.)				£24.00
Ditto, watermark sideways (3v.)				£4.00
1955 Waterlow "Castles" (4v.)				£245.00
1955-58 Edward (17v.)				£145.00
Ditto, watermark inverted (7v.)				£15.00
Ditto, watermark sideways (5v.)				£14.00
1957 Graphite (6v.)				£11.00
1958 1st De La Rue "Castles" (4v.)				£850.00
1958-65 Crowns, ordinary (17v.)				£8.50
Ditto, watermark inverted (7v.)				£50.00
Ditto, watermark sideways (7v.)				£7.00
1958-61 Graphite (8v.)				£85.00
Ditto, watermark inverted (5v.)				£80.00
1959 2nd De La Rue "Castles" (4v.)				£295.00
1959 Phosphor-graphite (8v.)				£85.00
1960 Green phosphor (9v.)				£30.00
1960-67 Crowns, phosphor (17v.)				£10.00
Ditto, watermark inverted (10v.)				£150.00
Ditto, watermark sideways (8v.)				£24.00
1963-68 1st Bradbury-Wilkinson "Castles" (5v.)				
2/6 x 2				£26.00
Machin gum Arabic (9v.)				£3.00
1967-70 Ditto, P.V.A. (16v.) 4d. x 2, 8d. x 2				£5.00
1967-68 Bradbury-Wilkinson no watermark				
"Castles" (4v.)				£14.00
1969 Machin high values (4v.)				£18.00

CANDLISH McCLEERY LTD.

the PHILATELIC REVIEW

Volume 5 No. 3

Edited by Mike and Jan Jackson

July 1981

CONTENTS

EDITORIAL

DOWNEY HEAD 2½d

Jim Hanson

REFLECTIONS ON PANES — 10

Sam Lawrence

FIRST DAY COVERS

John Forbes-Nixon

ADDITIONAL RATES OF POSTAGE

ON CERTAIN LETTERS

John Forbes-Nixon

ROYAL CYPHER — MISSING EXTENSION

PERFORATIONS

Bob Palmer

K.G.V NOTES

A POSTMAN'S FEATHERED FRIENDS

K.E.VII NOTES

CORRESPONDENCE

Cover: Downey Head 2½d — see page 34

EDITORIAL

33 The British Philatelic Exhibition is almost with us again, albeit
34 without a Saturday opening. The Exhibition miniature sheet will
feature a Downey Head item. Looking back to Stampex 1981 I
36 noted one particular exhibit covering the development of G.B. rolls
which seemed to me to warrant more recognition than it received.
The award just didn't acknowledge the original research
39 undertaken by the exhibitors.

It is understood that the exhibit may have been marked down
because it was a joint entry, and that a new rule may be introduced
39 barring such entries. If this is the case, then (a) the entry was
unfairly treated under the present rules and (b) why should the
organisers wish to discourage joint entries?

41 *Please note our new address for Editorial Correspondence:*

*Bow Cottage
Owston Road
Knossington
Leics. LE15 8LX.*

42

47

47

48

Published quarterly by Candlish McCleery Ltd. Price 75p.

International Standard Serial Number 0309-9350.

Annual subscription (four issues): Inland £3.00; Overseas (sea) £5.00, (airmail) £6.00.

Editorial Correspondence: Bow Cottage, Owston Road, Knossington, Leics. LE15 8LX.

Advertisement enquiries: 40 Whiteladies Road, Bristol BS8 2LG (telephone 0272 35038).

DOWNEY HEAD 2½d

Jim Hanson

A copy of the Downey Head 2½d, perf. 15×14, in an indigo blue shade was acquired a few months ago, and is illustrated in figure 1. This stamp has always been listed in S.G. but I had never seen a copy before, except for the sheet on display at LONDON 1980 shown by the National Postal Museum.

A visit to the NPM revealed that they had nine such sheets, all of them with the top left corner stamp missing. One of the sheets, Sheet A, also has the 3rd and 4th stamps of the top row missing — this is illustrated in figure 2, by courtesy of the National Postal Museum.

The marginal information on the nine sheets is as follows:

Sheet

1	Sheet A	I (fig. 2)
2	Sheet B	II
3	Sheet C	III
4	Steel Blue	MB 22036
5	Neutral Blue	MB 22422
6	Blue	MB 22307
7	Royal Blue	MB 21724
8	Blue	MB 21680
9	Blue	MB 22033

All of the top left hand corner copies are housed in a reference book and one other stamp from Sheet A is to be found in a similar volume. That leaves one stamp to be accounted for.

I am unable to say that the stamp illustrated in figure 1 is the missing copy — the shade does not quite match, although it is close enough for the difference to be accounted for by 'wear and tear' over the years. Confirmation will have to await the microscopic examination and comparison of the perforations, but meanwhile, does anybody have another copy?



Fig. 1.

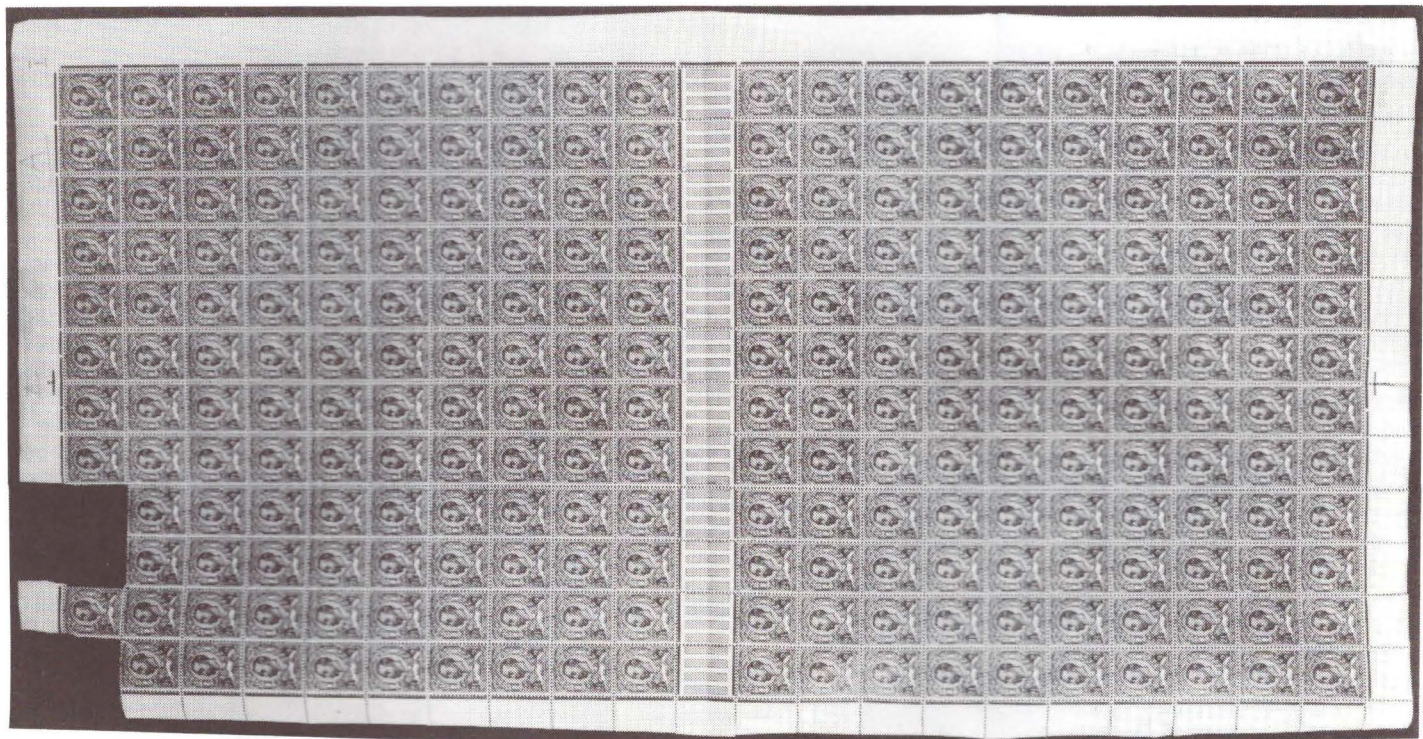


Fig. 2.

REFLECTIONS ON PANES -10

Sam Lawrence

The phenomenon known as the 'Double Paper' variety occurs with monotonous regularity at the printers, but regretfully, due to the vigilance exercised by the same printers, very few of this variety ever come on the market and those that do are almost always from sheets prepared for sale over the counter.

The variety is very simply explained. When the roll of stamp paper is nearing its end the printers join the next roll to it by glue, coloured paper, sellotape or a variety of other methods. This is done to prevent the re-threading of the new roll into the presses and allows for a much faster production run.

The presses continue printing over the join and the sheet containing the join is removed from the pile after separation. If, however, that same sheet should evade the eagle eyes of the checkers, it will continue its journey and finish up on the post office counter or in a booklet.

At different times, different methods have been employed by the printers to show

up the join and make its removal easier. Coloured paper has been and is still being used but at one time Harrisons, the printers, used a rubber stamp which printed, in violet, the word 'WASTE' to show the checkers which sheets were to be discarded.

Enquiries by me at Harrisons has elicited the fact that yes, this rubber stamp was used during the Wilding period, but no, no date can be put on its introduction or withdrawal from use, except that it was so long ago that no one remembers it and no, I could not have a strike of it as it had long since been lost.

Surprisingly therefore, that Len Newbery, that doyen of the booklet, tells me that during a visit to Harrisons in the spring of 1980 he actually saw that same rubber stamp in use. Not, however, marking double paper joins, but stamping packages of waste material earmarked for destruction.

By the nature of the mechanics of the thing, very few examples survive for collectors to add to their collections. However, some from counter sheets appear with some regularity; I myself have quite a few on the definitive stamps and even a

paper join right across a sheet on a low value commemorative. The amount that exist in booklet form must be very minute indeed. The few items I have in my collection are shown here.

Fig. 1. The 1d advert. pane has the upright Tudor Crown watermark and was acquired in the early 60's.

Fig. 2. The 2½d pane, also with the Tudor Crown watermark, inverted this time has a large part of the word 'WASTE' in violet ink printed across the stamp. It was this seemingly mass of violet ink, which at the time I thought were printer's inky finger marks, that started me on this particular piece of detective work. This pane I acquired in 1977.

Fig. 3. The 3d pane, with the Mult Crown watermark which is inverted, is in a 4/6 stamp book dated Feb. 1959 and was acquired by me early in 1980.

The difficulty in obtaining examples of this variety in booklet form can be seen by the almost 20 years that elapsed between the acquisition of my first and latest example of the 'Double Paper' variety.



Fig. 2a.



Fig. 2b.



Fig. 1.



Fig. 3.

No. 1, 1840.



To all Postmasters, Sub-Postmasters, and Letter Receivers.

GENERAL POST OFFICE,

June, 1840.

THE Lords of the Treasury having directed that the Sale of Postage *Label Stamps* and *Stamped Covers* by all Postmasters, Sub-Postmasters, and Letter Receivers in the Country shall commence as soon as they can be furnished with the proper License from the Stamp Office, and with the necessary supply of Postage Stamps, measures for this purpose are in progress, and the Stamp Office License and Bond will be transmitted, as early as possible, to those Postmasters, Sub-Postmasters, and Receivers not already licensed.

It is decided that every Postmaster, Sub-Postmaster, or Letter Receiver, without exception, shall sell the Postage *Label Stamps* and *Stamped Covers* to the Public at the following Prices, whatever be the number sold, whether a Single Stamp or more.

The Penny Label Stamps, at 1d. each.

The Two-penny ditto at 2d. "

The Penny Covers . . . at 1½d. "

The Two-penny ditto . . . at 2¼d. "

The *Stamped Envelopes*, (that is, Envelopes prepared in Diamond Shapes) will not be supplied by the Post Office, and are not subject to these restrictions as to Price.

As the above regulations apply equally to those Postmasters, Sub-Postmasters, or Letter Receivers who are already Distributors, Sub-Distributors, or Licensed Vendors of Stamps, they are hereby apprised that they will take effect on the 1st of July next, after which date, any Person in the employment of the Postmaster General, from whatever source he obtains his supply of Stamps, demanding or receiving more than the above mentioned prices for *Labels* or *Covers* will be punished by dismissal.

The Postmasters, Sub-Postmasters, and Receivers will be supplied with *Stamped Labels* and *Covers* from the Post Office, unless they should prefer obtaining them from the Stamp Office, in which case, they must first give written notice of such intention to the Postmaster General.

A Poundage will, hereafter, be allowed on the Amount of those Stamps which are supplied from the Post Office. The rate of this Poundage is at present under the consideration of the Lords of the Treasury.

By Command,

W. L. MABERLY,

FIRST DAY COVERS

John Forbes-Nixon

A new notice "To all Postmasters, Sub-Postmasters and Letter Receivers" has only recently been rediscovered which deals with the national distribution of Postage Label Stamps and Stamped Covers.

It is interesting to note this notice as illustrated although numbered No. 1 — 1840 is dated June 1840. Thus 6 May 1840 had already come and gone!

It seems reasonable to suppose therefore that stamps and Mulready stationery covers were only available for quite a limited number of towns "on the first day". This notice dated June 1840 is informing provincial districts about distribution from the Stamp Office for supply of labels and covers so it is to be assumed that they were not available to them on 6 May 1840.

Therefore the proposition is that First Day Covers dated 6 May 1840 either with a penny black or on a Mulready are a lot scarcer than they might well have been!

ADDITIONAL RATES OF POSTAGE ON CERTAIN LETTERS

John Forbes-Nixon

The additional halfpenny added to mail crossing the Scottish border by way of Act of Parliament in 1813 in connection with the maintenance of turnpike roads used by four-wheeled coaches is well known.

Less well known is the Welsh additional halfpenny for the use and maintenance of Milford Haven road via Hobbs Point, for mail from Ireland from Waterford from June 1836. See Notice in Figure 1 giving details for mail taking this route at a surcharge rate.

No handstamps are known for marking letters travelling this route and the typical manuscript additional half is shown in Figure 2, with the 1/4½ rating on a letter from Cork via Waterford on 6 January 1837 travelling this route to Milford thence to London.

Both the Scottish and Welsh additional halfpenny surcharges ceased with the postal reform on 5 December 1839.

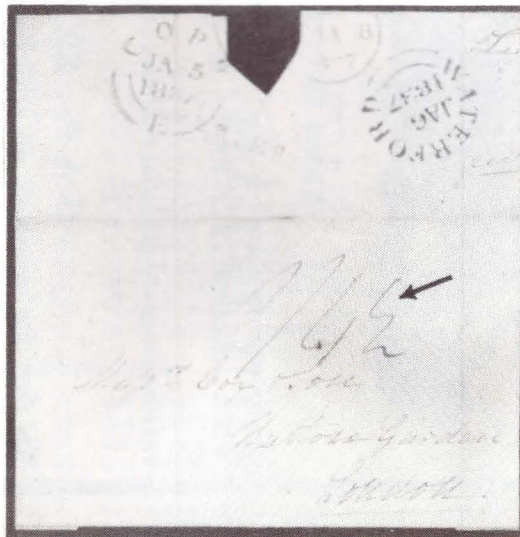


Fig. 2.



ANNO SEXTO

GULIELMI IV. REGIS.

C A P. XXV.

An Act for granting an additional Rate of Postage on Letters between *Great Britain* and *Ireland* by way of *Milford* and *Waterford*.

[21st June 1836.]

WHEREAS it is expedient to improve the Communication by the Post between *Great Britain* and *Ireland* by way of *Milford* and *Waterford*, and to provide Security for the Repayment of the Principal and Interest of any Advances which may be made for that Purpose by the Imposition of a small additional Rate of Postage on Letters and Packets passing by that Route: Be it therefore enacted by the King's most Excellent Majesty, by and with the Advice and Consent of the Lords Spiritual and Temporal, and Commons, in this present Parliament assembled, and by the Authority of the same, That from and after the passing of this Act it shall and may be lawful for the Postmaster General for the Time being and he is hereby required to charge and levy on all Letters and Packets conveyed by Post to and from *Great Britain* and *Ireland*, or to and from any Part beyond the Seas and *Ireland*, by way of *Milford* and *Waterford*, in addition to the Rates and Duties now payable by Law for the Conveyance by the Post of such Letters and Packets, the Rates and Duties following; (that is to say,)

Additional Rates of Postage on certain Letters.

For every Single Letter the additional Sum of One Halfpenny:

For every Double Letter the additional Sum of One Penny:

For every Treble Letter or other Letter under an Ounce in Weight the additional Sum of One Penny Halfpenny:

And for every Ounce in Weight the additional Sum of Two-pence, and so in proportion for every Letter or Packet of greater Weight than an Ounce, reckoning every Quarter of an Ounce equal to a Single Letter:

3 Y

And

ROYAL CYPHER-MISSING EXTENSION PERFORATIONS

Bob Palmer

From time to time the type 2 perforating machine had the single extension hole which appeared in the bottom margin when perforated left to right, broken off.

	<i>Beaumont & Stanton</i>	<i>Gibbons</i>	<i>Personally Recorded</i>
½d		"is known"	C 13, D 14, G 15, J 17
1d			
1½d	C 13, J 17	C 13, J 17	
2d	C.13	C.13	C.13
2½d	C 14	C 14	C 14
3d			
4d	J 17	J 17	J 17
5d			
6d	C.13, A.24, B. 24	C.13, W.23, A.24, B.24	C.13, W.23, A.24, B.24
7d	J 17	J 17	J 17
8d			
9d			
10d			
1s	J 17	J 17	J 17

Fig. 1.

The analysis given in figure 1 shows a tabulated list of previously recorded and personally recorded occurrences of this variety (Gibbons type 2c).

Various pin breakages also occurred on the multiple pin extension spur, these showing in the bottom margin when perforated right to left. (According to Beaumont & Stanton this spur consisted of 14 pins but it did in fact consist of 17-plus pins).

The analysis in figure 2 shows the occurrences listed in Beaumont & Stanton versus those found by the author.

	<i>Beaumont & Stanton</i>			<i>Personally Recorded</i>					
	5th	6th	10th	2nd	4th	5th	6th	11th	5th & 8th
½d	F 15 & P 20			C 13		O 20	G 15		P 20
1d	C 13			C 13	G 15	L 18	M 19		P 20
1½d	C 13		Q 20			O 20	W 23	T 22	
2d	G 15	D 14					D 14		
2½d									
3d	C 13								
4d	G 15								
5d									
6d									
7d		G 15							
8d									
9d									
10d									
1s									

Fig. 2.

K.G.V NOTES

Downey Head 1d Die 1B — Plate flaw

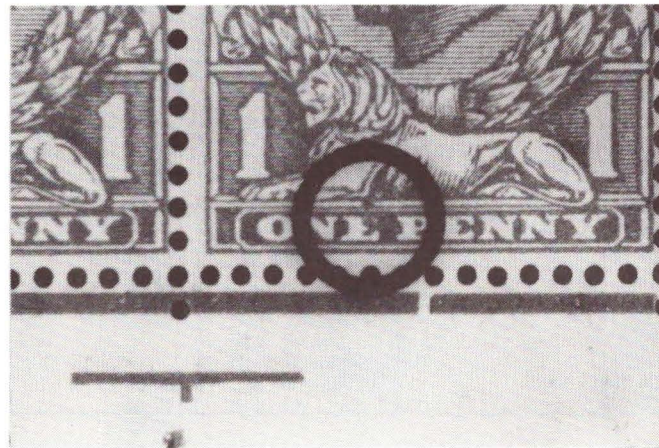
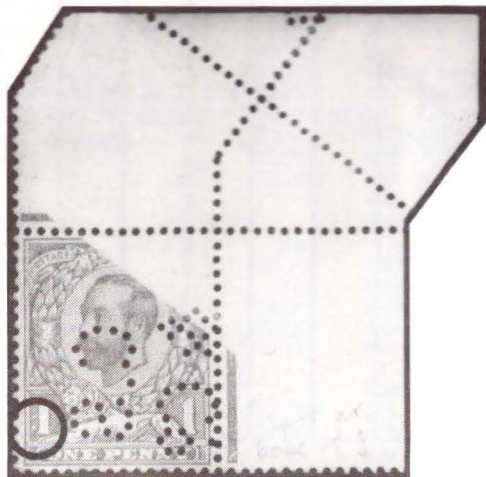
In addition to a rather nice flaw to the left of the base of the left figure 1, this curiosity has a paper fold (folded prior to printing and perforating) and the perfin C.S. & Co.

Downey Head 1d Die 1A — Plate flaw

This small dash between E and P of ONE PENNY is constant. Plate 13b, stamp 20.2.

Downey Head 1d Die 1A — Printing flaw

This coloured blob on and over E of ONE occurs on stamp 20.7, Somerset House printing from plate 2. It's probably not constant, but you never know.



Downey Head 1d Die 1B — Plate flaw

This flaw is a white patch at the base of the top leaf of the wreath at the bottom as it emerges from the lower ribbon (which is a pretty good reason for advocating the use of a flaw-position gauge!). Plate 15b, stamp 20.12.

Downey Head 1d Die 2, Crown — Plate flaw

This small break in the outer frame to the right of the figure 1 appeared during the printing with control B 12 (close). Plate 7b, stamp 19.12.



Downey Head ½d Die 2, Crown — Extensive plate damage

Jim Hanson has shown me this remarkable stamp which has one of the largest plate flaws I have seen. The main areas of damage are in the background lines behind the head and just in front of the King's eye; and to the letters UE of REVENUE which have changed beyond recognition. Although all four sides have their perforations cut straight, I don't think it is from a roll. In addition to these straight perforations, it has no gum, which gives me the feeling it may never have been issued in the normal way.



Royal Cypher — New Discoveries

Bob Palmer has informed me of three new control/plate combinations he has found recently; ½d control Q 21 with plate 61c; 1d control M 19 with plate 105 and 1d control S 21 with plate 106.

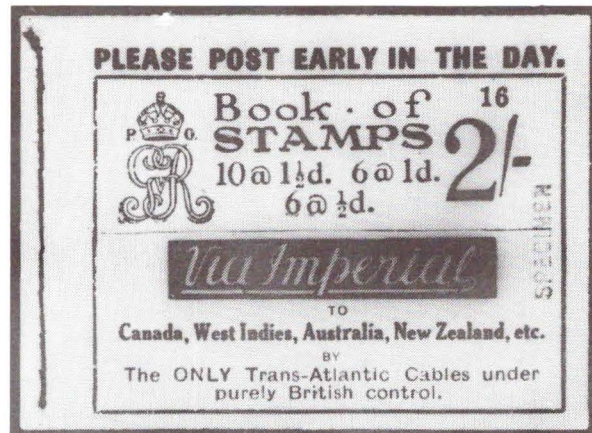
Royal Cypher 1½d — Advert. pane overprinted SPECIMEN

This 'Harmer, Rooke/Millennium' advert. pane (watermark upright) has the SPECIMEN Type 23 overprint. This is a scarce item un-overprinted, and we can't recall seeing a Specimen pane before.



Block Cypher 2s Booklet — Overprinted SPECIMEN

This complete booklet includes the advert. pane; Air Mails (enquire)/Cable via Imperial. All the stamps, and the front cover, bear the SPECIMEN Type 30 overprint. The booklet is Type 11, No. 16, and all panes have upright watermark, except the second (1½d) pane, which is inverted.



Downey Head ½d Die 2, Simple Cypher — ‘Printer’s Offset’

This amusing variety is a result of the printer putting his thumb or finger on the plate. I particularly like the way the lines of the print suggest a new style of engraving! Plate 13, control B 12 (wide).

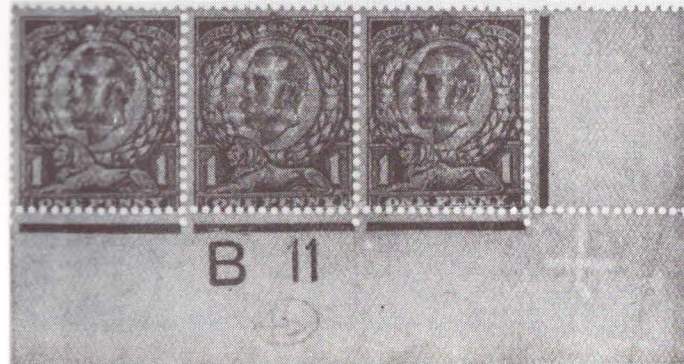
Downey Head ½d Die 2, Multiple Cypher — Crown missing in watermark

Although this variety is well known, and has been for many years, I can't recall ever seeing it illustrated. This particular example has a blurred and weak impression to the lower right of where the missing crown should have been. Is this an early example before the crown fell off the dandy roll altogether? Plate 10b, control B 12 (wide), the watermark variety being under stamp 20.11.



Downey Head watermark Crown — Deformed watermark

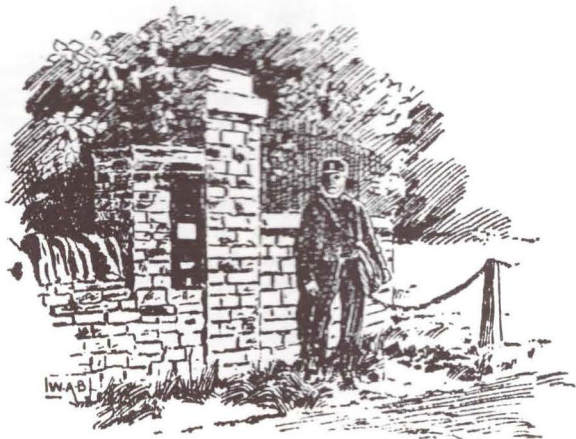
This deformed small corner cross has been found on the 1d Die 1B, 1d Die 2 and ½d Die 2. Dr. R. W. Powell, FRPS,L, has not been able to find this on any K.E.VII issues, so it seems likely to have begun with the early Downey Heads.



A POSTMAN'S FEATHERED FRIENDS

This little anecdote is taken from "The Bristol Royal Mail" by R. C. Tombs, published by J. W. Arrowsmith, Bristol, circa 1900.

"A tit made her nest in the bottom of a Post Office letter box at Winterbourne, near Bristol, laid her eggs, and notwithstanding that letters were posted in the box and that the box was cleared by the postman every day, the bird tenaciously held to her nest and brought up five young tits, two of which perished in their attempts to get out of the box by means of the small posting aperture through which their mother had squeezed so frequently, carrying with her all the materials for the nest. The three survivors flew off one day when the door of the box was purposely left open for a time by the obliging postman portrayed in the picture".



K.E. VII NOTES

K.E.VII 1s — Misplaced centre

Peter High has shown me this example of a misplaced centre on a K.E.VII 1s stamp. The green printing from the Head plate overlaps, and appears to be on top of, the red ink from the Frame plate. Examples of Edwardian bi-colours with such mis-alignment are scarce, especially when one colour overlaps the other.



CORRESPONDENCE

Royal Cypher Plates

Reference Bob Palmer's article in volume 5, number 2 (New 1912-22 Royal Cypher Plates), I have the fellow of his One Penny M 19 perf. (Fig. 5). Mine is a block of eight imperf. at bottom — i.e. one extension pin and thirteen pins showing on the right.

P. A. STRONG

Photogravure: Paper Joins and an Unrecorded Item

Re 'George V Notes' on page 30 of the April 1981 issue — 'This issue's puzzle picture' has me in a puzzle! Why 'puzzle'??

The K.G.V Photogravure 1½d on double paper is well known, and other values also exist. However, the 1½d (which is the value under discussion) exists on double paper in all three sizes I believe.

I have a block of 12 (2×6) from positions 15/5-20/6 with lower margin showing vertical divisor at right of margin, in the large size. Stamps 16/5 and 16/6 have the top half printed on one reel, and the bottom half printed on the other. The bottom of the upper reel extends (unprinted) from the centre of 16/5 and 16/6 to the centre of 18/5 and 18/6. Thus 17/5 and 17/6 are printed on two thicknesses of paper, whilst the lower halves

of 16/5 and 16/6, and the upper halves of 18/5 and 18/6 are also on double paper.

I was also interested in the recent discovery of cylinder 46 on the ½d photogravure, and whilst I cannot claim a new discovery of this magnitude, I do have a copy of the 1½d cylinder 137 stamp with perf Type 6B, in a vertical strip of 3. This has not previously been recorded, and is listed in SG Spec. Cat. p. 224 as 'does not exist'.

H. J. RUSSELL

The 1½v Cut Variety

The point raised by your correspondent, Mr. M. M. Anderson of Newfoundland (Vol. 2 No. 5), with regard to the 1½v cut variety, is an interesting one, and one that can be explained. There are a number of methods by which a genuine pane with this variety can be checked. Three methods are listed here, and one or all of these methods can be used.

1. Under magnification (using an ordinary magnifying glass, a ×10, or if sufficiently skilled one's own eyes) the perfs. on the torn edge show all the ragged fibres that remain after tearing, as opposed to the clean cut of the guillotine.

2. All the 1½v cuts must have the "I" type perf. variety as this is the usual perf. that is on the sheet margins. The 1½v cut is

used to remove the sheet selvages and in some extreme cases to remove damaged parts of sheets, or in the case where two columns only of a sheet were used, such as in the preparation of the so-called 'Razor Blade' type booklets that contained the panes of two.

3. Yet another method can be used and that is to plate the panes and find out by so doing whether the pane carrying the 1½v cut can have come from the current position in the sheet. Owing to the paucity of the material available, it is impossible to plate most of the Q.E.II pre-decimal panes, but fortunately modern panes present no such difficulty. Due to the excellent work of the G.B. Decimal Booklet Study Group all the decimal panes have been plated, and by using the results of the group's studies it is possible to allocate a particular pane to its correct sheet position. For instance it is possible using the second method to know precisely whether a pane of DP6 carrying the 1½v cut variety is genuine or not by the position allocated to it by the plating chart.

One last word; I have in my collection quite a few 1½v cuts and some that have been torn but have no cuts (these can easily be added but to what purpose?) of the King's issues. As there are no records or sheets available to help find the reasons for these items, one can only use guesswork. I shall be only too happy, however, to supply any interested parties with details or photostats of these items.

SAM LAWRENCE

GREAT BRITAIN FINE STAMPS

1840 1d Mulready cover forme 2 stereo A24. A very fine clean example. **£55.00**

1840 1d Black plate 1a lettered PI. A very fine used four margin example with clean red M.C. S.G. 2. **£85.00**

1840 1d Black plate 1b lettered KH. A fine used four margin example with black M.C. S.G. 2. **£55.00**

1840 1d Black plate 3 lettered NF. A very fine used four margin example with clean red M.C. S.G. 2. **£85.00**

1840 1d Black plate 9 lettered LI. A very fine used four margin example with black M.C. S.G. 2. **£70.00**

1840 2d Pale blue, plate 1 lettered FB. A very fine used four margin example with clean red M.C. S.G. 6. **£125.00**

1841 1d Red-brown from black plate 9 lettered DK. a fine used four margin example with black M.C. S.G. 7. **£15.00**

1841 1d Red-brown lettered NE. A very fine used four margin example with inverted watermark, superb strike of the no. 16 in diamond cancel. S.G. 8g. **£15.00**

1841 1d Red-brown lettered HB. A very fine used four margin example with no. 6 in M.C. cancel. S.G. 8m. **£18.00**

1841 1d Red-brown lettered BL. A very fine used four margin example with excellent strike of the number 7 in M.C. S.G. 8m. **£18.50**

1841 1d Red-brown lettered OJ. A very fine used four margin example with no. 10 in cross cancel. S.G. 8m. **£30.00**

1841 2d Blue plate 3 lettered ND-NE. A very fine used four margin pair with neat black M.C. cancel. S.G. 14. **£40.00**

1855 2d Blue plate 5 large crown, perf 16, lettered IH. A very fine used example, well centred with good perfs., no. 17 in diamond cancel. S.G. 27. **£55.00**

1855 2d Blue plate 5, large crown, perf 14, lettered LA. a very fine used example with no. 16 London Chief Office postmark. S.G. 34. **£11.50**

1857 2d Blue large crown, perf 14, plate 6 lettered EH. A very fine used example well centred with good perfs. S.G. 35. **£14.00**

1858 2d Blue plate 6 large crown perf 16 lettered GF. A fine used example. S.G. 36a. **£45.00**

1857 1d Rose-red, large crown, perf. 14, lettered EA-FB. A superb mint original gum block of four. S.G. 40. **£55.00**

1858 2d Blue plate 8 lettered KD. A superb used example with no. 18 London Chief Office postmark. S.G. 45. **£9.50**

1858 2d Blue plate 8 lettered JF. A fine used example with inverted watermark. S.G. 45. **£30.00**

1858 2d Blue plate 12 lettered GI. A fine used example, well centred with good perfs. S.G. 45. **£19.50**

1870 ½d Rose-red plate 6 lettered LF-MG. A very fine mint original gum block of four, well centred with good perfs. S.G. 48. **£55.00**

1870 ½d Rose-red plate 11 lettered ON-PO. A superb mint original gum block of four. S.G. 48. **£65.00**

1873 4d Vermilion plate 14 lettered SE. A superb lightly mounted mint example, well centred with good perfs. S.G. 94. **£235.00**

1867 5/- Rose, plate 1 lettered BF. A fine C.D.S. used example dated JU 14 72. S.G. 126. **£55.00**

1876 1/- Pale green plate 13 lettered LC. A very fine mint example. S.G. 150. **£165.00**

1876 4d Vermilion, plate 15 lettered TJ. A lightly mounted mint imperforate bottom margin example of this colour trial. S.G. 153. **£40.00**

1880 5d Indigo, crown watermark. An unmounted mint imperforate example of the imprimatur. Rare. S.G. 169. **£195.00**

1884 4d Dull green lettered DA. A very fine lightly mounted mint example. S.G. 192. **£95.00**

1883 9d Dull green lettered BH. A very fine lightly mounted mint example. S.G. 195. **£285.00**

1902 De La Rue ½d green plate proof. A very fine imperforate example on buff paper. S.G. 216. **£9.50**

1902 De La Rue 1d scarlet plate proof. A very fine imperforate example on buff paper. S.G. 219. **£9.50**

1902 De La Rue 4d orange plate proof. A imperforate single on buff paper. S.G. 239. **£12.50**

1902 De La Rue 5d dull purple and ultramarine plate proof. A very fine imperforate example on buff paper. S.G. 242. **£12.50**

1902 De La Rue 6d black plate proof. A superb interpanneau marginal example on thin white card. S.G. 245. **£45.00**

1902 De La Rue 5/- bright carmine. A very fine used example well centred with good perfs. S.G. 263. **£19.50**

1911 Harrison perf 14 ½d deep dull yellow-green (very blotchy print). An unmounted mint example with R.P.S. certificate. S.G. Spec. M3(4). **£45.00**

1911 Harrison perf. 14 1d Rose-red without watermark. An unmounted mint single. S.G. Spec. M6a. **£55.00**

1911 Downey Head ½d bright green die 1b, crown watermark inverted. An unmounted mint booklet pane of six with good perfs all round. S.G. Spec. NB1a. **£30.00**

1912 Downey Head ½d green die 2, crown watermark. A lightly mounted mint vertical coil join pair with good perfs. S.G. Spec. N4(1)e. **£10.00**

1910 Perkins Bacon small carmine-pink essay (type A). A fine imperforate example printed by the Printex method. **£85.00**

1911 Downey Head 1d carmine-red, die 1a, crown watermark. An unmounted mint copy on experimental chalk-surfaced paper. S.G. 327b. **£235.00**

1912 Downey Head 1d brilliant scarlet die 2 crown watermark. A marginal mint example of this essay for colour. Rare. **£295.00**

1912-24 Royal Cypher ½d green. An unmounted mint marginal block of four showing "stitch" watermark. S.G. 351. **£45.00**

1912-24 Royal Cypher 1d vermilion. A superb mint block of four in an outstanding deep shade with R.P.S. certificate. S.G. 358. **£95.00**

1912-24 Royal Cypher 1d scarlet-vermilion. An unmounted mint control (C 12) pair with R.P.S. certificate. Rare from this control. S.G. 361. **£145.00**

1912-24 Royal Cypher 1½d bright chestnut. An unmounted mint corner control block of four (T 22) with R.P.S. certificate. S.G. Spec. N18(14). **£160.00**

CANDLISH McCLEERY LTD.

Printed in Scotland by Woods of Perth (Printers) Ltd., 3-5 Mill Street, Perth

GREAT BRITAIN **ILLUSTRATED**
LISTS

WE RECOMMEND YOU SEND FOR THE ABOVE ILLUSTRATED LISTS, AND WOULD WELCOME YOUR MAKING COMPARISONS WITH OUR COMPETITORS.

It pays to "shop around", and whereas we do not make claims to be the cheapest always, we do try to be competitive.

Whether you collect issued stamps or die proofs and colour trials, etc., we think there will always be something to interest you in our Lists.

If you would like to be included on our Mailing Lists for Great Britain Stamps, please write to the address below.

CANDLISH McCLEERY LTD.

40 WHITELADIES ROAD, BRISTOL BS8 2LG

Telephone (0272) 35038

